

SAME DAY SHIPMENT MODEL AVAILABLE!

Base-Ported Pressure Filter **KF30**



Features and Benefits

- Base-ported pressure filter
- Can be installed in vertical or horizontal position
- Meets HF4 automotive standard
- Element changeout from top minimizes oil spillage
- Offered in pipe, SAE straight thread, flanged and ISO 228 porting
- No-Element indicator option available
- Available with non-bypass option with high collapse element
- Integral inlet and outlet female test points option available
- Offered in conventional subplate porting
- Same day shipment model available
- Double and triple stacking of K-size elements can be replaced by single KK or 27K-size elements

Model No. of filter in photograph is KF301K10SD.



INDUSTRIAL



**AUTOMOTIVE
MANUFACTURING**



**MACHINE
TOOL**



**MINING
TECHNOLOGY**



**POWER
GENERATION**



**PAPER
INDUSTRY**



AGRICULTURE



**MOBILE
VEHICLES**

100/150 gpm NF30
380/570 L/min NFS30

3000 psi YF30
210 bar DF40

DF40

CF40

CFX30

RF60

RFS50

CF60

VF60

Applications

KF30

TF50

KF50

KC50

KFH50

MKF50

KC65

Filter Housing Specifications

FOF60-03

NOF30-05

NOF50-760

NMF30

RMF60

Cartridge
Elements

Flow Rating: Up to 100 gpm (380 L/min) for 150 SUS (32 cSt) fluids
With 2" porting only, up to 150 gpm (570 L/min) for 150 SUS (32 cSt) fluids

Max. Operating Pressure: 3000 psi (210 bar)

Min. Yield Pressure: 12,000 psi (830 bar)

Rated Fatigue Pressure: 2500 psi (170 bar), per NFPA T2.6.1-2005

Temp. Range: -20°F to 225°F (-29°C to 107°C)

Bypass Setting: Cracking: 40 psi (2.8 bar)
Full Flow: 61 psi (4.2 bar)
Non-bypassing model has a blocked bypass.

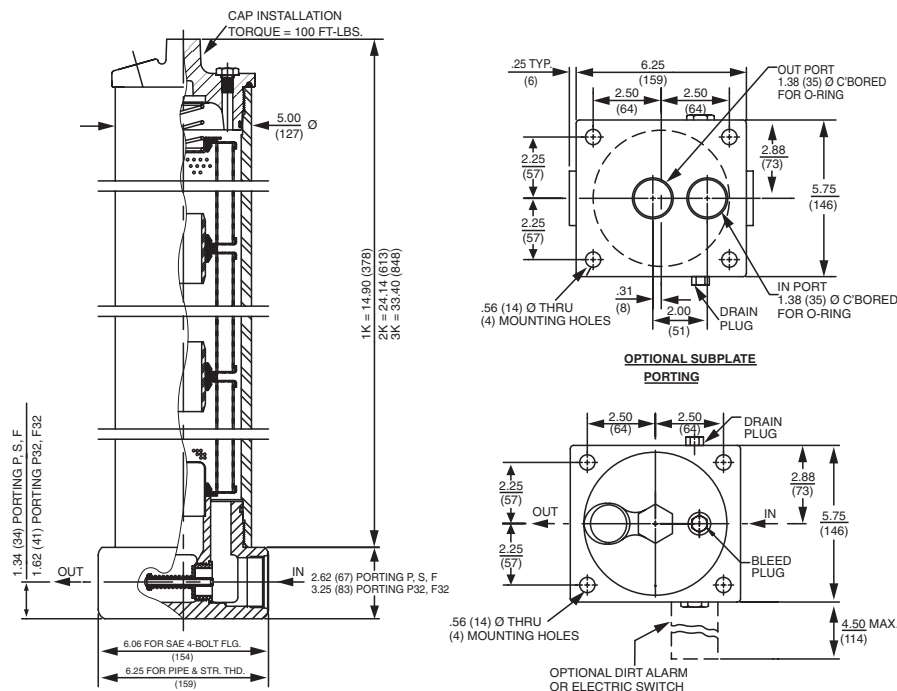
Porting Base & Cap: Ductile Iron
Element Case: Steel

Weight of KF30-1K: 48 lbs. (22 kg)

Weight of KF30-2K: 65 lbs. (30 kg)

Weight of KF30-3K: 81 lbs. (37 kg)

Element Change Clearance: 8.50" (215 mm) for 1K; 17.50" (445 mm) for KK; 26.5" (673 mm) for 27K



Metric dimensions in ().

Element Performance Information

Element	Filtration Ratio Per ISO 4572/NFPA T3.10.8.8 Using automated particle counter (APC) calibrated per ISO 4402			Filtration Ratio wrt ISO 16889 Using APC calibrated per ISO 11171	
	$\beta_x \geq 75$	$\beta_x \geq 100$	$\beta_x \geq 200$	$\beta_{x(c)} \geq 200$	$\beta_{x(c)} \geq 1000$
K3/KK3/27K3	6.8	7.5	10.0	N/A	N/A
K10/KK10/27K10	15.5	16.2	18.0	N/A	N/A
KZ1/KKZ1/27KZ1	<1.0	<1.0	<1.0	<4.0	4.2
KZ3/KKZ3/27KZ3	<1.0	<1.0	<2.0	<4.0	4.8
KZ5/KKZ5/27KZ5	2.5	3.0	4.0	4.8	6.3
KZ10/KKZ10/27KZ10	7.4	8.2	10.0	8.0	10.0
KZ25/KKZ25/27KZ25	18.0	20.0	22.5	19.0	24.0
KZX3/KKZX3/27KZX3	<1.0	<1.0	<2.0	4.7	5.8
KZX10/KKZX10/27KZX10	7.4	8.2	10.0	8.0	9.8

Dirt Holding Capacity

Element	DHC (gm)	Element	DHC (gm)	Element	DHC (gm)
K3	54	KK3	108	27K3	162
K10	44	KK10	88	27K10	132
KZ1	112	KKZ1	224	27KZ1	336
KZ3	115	KKZ3	230	27KZ3	345
KZ5	119	KKZ5	238	27KZ5	357
KZ10	108	KKZ10	216	27KZ10	324
KZ25	93	KKZ25	186	27KZ25	279
KZX3	40*	KKZX3	80	27KZX3	120
KZX10	49*	KKZX10	98	27KZX10	147

Element Collapse Rating: 150 psid (10 bar) for standard elements
3000 psid (210 bar) for high collapse (ZX) versions

Flow Direction: Outside In

Element Nominal Dimensions: K: 3.9" (99 mm) O.D. x 9.0" (230 mm) long
KK: 3.9" (99 mm) O.D. x 18.0" (460 mm) long
27K: 3.9" (99 mm) O.D. x 27.0" (690 mm) long

*Based on 100 psi terminal pressure

Filter Model Number Selection

Same Day Shipment Model
See Appendix D for details.

How to Build a Valid Model Number for a Schroeder KF30:

BOX 1	BOX 2	BOX 3	BOX 4	BOX 5	BOX 6	BOX 7	BOX 8
KF30	-	-	-	-	-	-	-

Example: NOTE: Only boxes 6 and 8 may contain more than one option

BOX 1	BOX 2	BOX 3	BOX 4	BOX 5	BOX 6	BOX 7	BOX 8
KF30	-	1	-	KZ5	-	S	-
							= KF301KZ5SD5

Filter Series	Number of Elements	Element Part Number					
KF30	1	K Length	KK Length	27K Length			
	2	K3	KK3	27K3	= 3 μ E media (cellulose)		
KFN30 (Non-bypassing: requires ZX high collapse elements)	3	K10	KK10	27K10	= 10 μ E media (cellulose)		
		K25			= 25 μ E media (cellulose)		
		KZ1	KKZ1	27KZ1	= 1 μ Excellement® Z media (synthetic)		
		KZ3	KKZ3	27KZ3	= 3 μ Excellement Z media (synthetic)		
		KZ5	KKZ5	27KZ5	= 5 μ Excellement Z media (synthetic)		
		KZ10	KKZ10	27KZ10	= 10 μ Excellement Z media (synthetic)		
		KZ25	KKZ25	27KZ25	= 25 μ Excellement Z media (synthetic)		
		KZX1	KKZX1	27KZX1	= 1 μ Excellement Z media (high collapse center tube)		
		KZX3	KKZX3	27KZX3	= 3 μ Excellement Z media (high collapse center tube)		
		KZX5	KKZX5	27KZX5	= 5 μ Excellement Z media (high collapse center tube)		
		KZX10	KKZX10	27KZX10	= 10 μ Excellement Z media (high collapse center tube)		
		KZX25	KKZX25	27KZX25	= 25 μ Excellement Z media (high collapse center tube)		
		KW	KKW	27KW	= W media (water removal)		
		KM10			= K size 10 μ M media (reusable metal)		
	KM25			= K size 25 μ M media (reusable metal)			
	KM60			= K size 60 μ M media (reusable metal)			
	KM150			= K size 150 μ M media (reusable metal)			
	KM260			= K size 260 μ M media (reusable metal)			

BOX 4	BOX 5	BOX 6	BOX 7
Seal Material	Porting	Options	Dirt Alarm® Options
Omit = Buna N	P = 1½" NPTF	Omit = None	Omit = None
V = Viton®	P32 = 2" NPTF	M = Magnet inserts (not available w/ indicator in cap)	D = Pointer
H = EPR	S = SAE-24	X = Blocked bypass	D5 = Visual pop-up
H.5 = Skydrol® compatibility	F = 1½" SAE 4-bolt flange Code 61	50 = 50 psi bypass setting	D5C = D5 in cap
	F32 = 2" SAE 4-bolt flange Code 61	L = Two ¼" NPTF inlet and outlet female test ports	D9 = All stainless D5
	O = Subplate	U = Series 1215 7/16 UNF Schroeder Check® Test Point installation in cap (upstream)	D8 = Visual w/ thermal lockout
	B24 = ISO 228 G-1½"	UU = Series 1215 7/16 UNF Schroeder Check Test Point installation in base (upstream and downstream)	D8C = D8 in cap
			Electrical
			MS5 = Electrical w/ 12 in. 18 gauge 4-conductor cable
			MS5LC = Low current MS5
			MS10 = Electrical w/ DIN connector (male end only)
			MS10LC = Low current MS10
			MS11 = Electrical w/ 12 ft. 4-conductor wire
			MS12 = Electrical w/ 5 pin Brad Harrison connector (male end only)
			MS12LC = Low current MS12
			MS15DC = Electrical, direct current normally open, for DC use only
			MS15DCNC = Electrical, direct current normally closed, for DC use only
			MS16 = Electrical w/ weather-packed sealed connector
			MS16LC = Low current MS16
			MS17LC = Electrical w/ 4 pin Brad Harrison male connector
			Electrical with Thermal Lockout
			MS5T = MS5 (see above) w/ thermal lockout
			MS5LCT = Low current MS5T
			MS10T = MS10 (see above) w/ thermal lockout
			MS10LCT = Low current MS10T
			MS12T = MS12 (see above) w/ thermal lockout
			MS12LCT = Low current MS12T
			MS16T = MS16 (see above) w/ thermal lockout
			MS16LCT = Low current MS16T
			MS17LCT = Low current MS17T
			Electrical Visual
			MS = Cam operated switch w/ ½" conduit female connection
			MS13 = Supplied w/ threaded connector & light
			MS14 = Supplied w/ 5 pin Brad Harrison connector & light (male end)
			Electrical Visual with Thermal Lockout
			MS13DCT = MS13 (see above), direct current, w/ thermal lockout
			MS13DCLCT = Low current MS13DCT
			MS14DCT = MS14 (see above), direct current, w/ thermal lockout
			MS14DCLCT = Low current MS14DCT

- NOTES:
- Box 2. Number of elements must equal 1 when using KK or 27K elements.
 - Box 3. Replacement element part numbers are identical to contents of Boxes 3 and 4. Double and triple stacking of K-size elements can be replaced by single KK and 27K elements, respectively.
 - Box 4. H.5 seal designation includes the following: EPR seals, stainless steel wire mesh on elements, and light oil coating on housing exterior. Viton is a registered trademark of DuPont Dow Elastomers. Skydrol is a registered trademark of Solutia Inc.
 - Box 5. For options F & F32, bolt depth .75" (19 mm). For option O, O-rings included; hardware not included.
 - Box 6. X and 50 options are not available with KFN30.
 - Box 7. Standard indicator setting for non-bypassing model is 50 psi unless otherwise specified.
 - Box 8. Options N, G509 and G588 are not available with KFN30. N option should be used in conjunction with dirt alarm.

BOX 8
Additional Options
Omit = None
N = No-Element indicator
G509 = Dirt alarm and drain opposite standard
G588 = Electrical switch and drain opposite standard