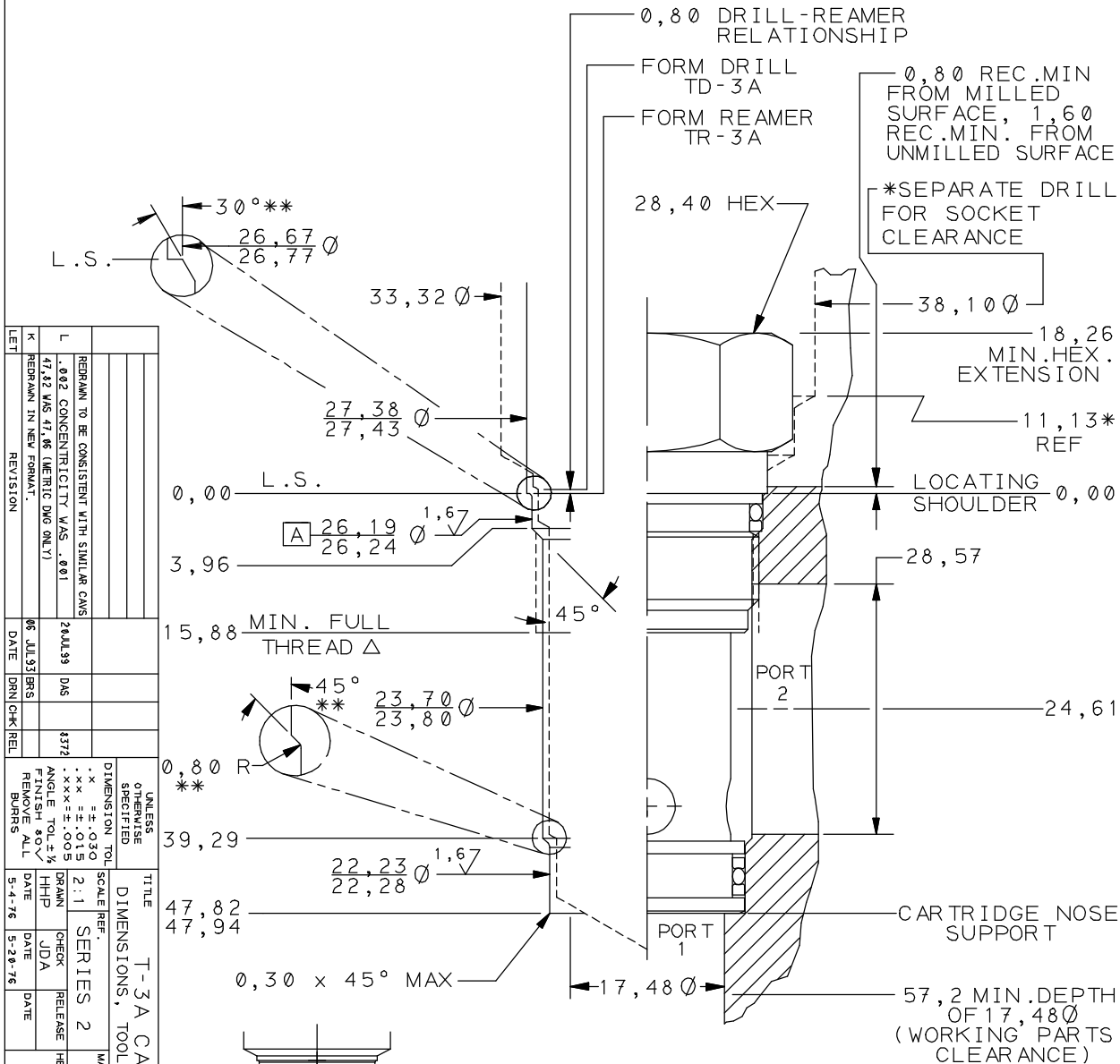


T-3A CAVITY DETAILS
(ALL DIMENSIONS ARE IN MILLIMETERS)

Δ 1.000-14UNS-2B THREAD
24,22/24,41 PITCH DIA.



LET	REVISION	DATE	DRN	CHK	REL	UNLESS OTHERWISE SPECIFIED TOLERANCES ARE: ...X... ±.030 ...XXX... ±.015 ...XXX... ±.005 FINISH 80°V REMOVE ALL BURNS	TITLE T-3A CAVITY DIMENSIONS, TOOLING, PORTING	SCALE REF. 2.1	SERIES 2	MATERIAL	REVISION	PART NO.	SHEET	METRIC
L	REWORK TO BE CONSISTENT WITH SIMILAR CWS	24 JUL 89	DAS								L	T-3A	2 OF 2	
K	REWORK WAS 47.86 (MERIC DNG DWG 1)													
K	REWORK IN NEW FORMANT	06 JUL 93	BRS											
LET	REVISION	DATE	DRN	CHK	REL									

⊙ 0,05 A THREAD AND ALL DIAMETERS

* SOCKET WRENCH CLEARANCE DIAMETER. RECOMMENDED MAXIMUM L.S. DEPTH WITHOUT SOCKET CLEARANCE: 11,13
MINIMUM CENTERLINE-TO-EDGE DISTANCE: 18,26
MINIMUM CENTERLINE-TO-CENTERLINE DISTANCE: 34,92
NBOM CALLOUT: SUN STD T-3A CAVITY
NBOM CODE: T3A

** ALL O-RING "LEAD IN'S" TO BE SMOOTH AND FREE OF NICKS AND SHARP EDGES.

PROPRIETARY NOTICE
THIS DRAWING DESCRIBES A PROPRIETARY PRODUCT OF SUN HYDRAULICS CORPORATION AND MAY NOT BE REPRODUCED OR GIVEN TO A THIRD PARTY WITHOUT WRITTEN PERMISSION FROM SUN HYDRAULICS CORPORATION
© SUN HYDRAULICS CORPORATION



REVISION PART NO. T-3A METRIC SHEET 2 OF 2